

AREA: OAKWORTH

Site count	Capacity Overview	Headline Analysis	Detailed Tables
-------------------	--------------------------	--------------------------	------------------------

ALL SITES		SITES WITHIN TRAJECTORY (DELIVERABLE OR DEVELOPABLE)	
Total No Of Sites	9	No of Green Field Sites	5
Total Area (Ha)	17.14	No Of PDL Sites	1
RUDP Phase 1 Housing Sites		Mixed PDL / Green Field	1
RUDP Phase 2 Housing Sites		Wholly / mainly within flood zone 1	
Sites with Outline / Full pp for Housing		Wholly / mainly within flood zone 2	
Suitable Now	3	Wholly / mainly within flood zone 3a	
Potentially Suitable (Policy Constraints)	6	Wholly / mainly within flood zone 3b	
Potentially Suitable (Physical Constraints)		Within / partly within green belt	6
Unsuitable		Within / partly within local wildlife designations	
		Within partly within local green space designations	

DWELLING CAPACITY (Based on Median of Upper and Lower)							
	No Of Sites	Hectares	Short	Medium	Long	Total	% of District Total
OAKWORTH	7	11.38	19	100.5	191.5	311	0.8%

HEADLINES / MAIN POINTS

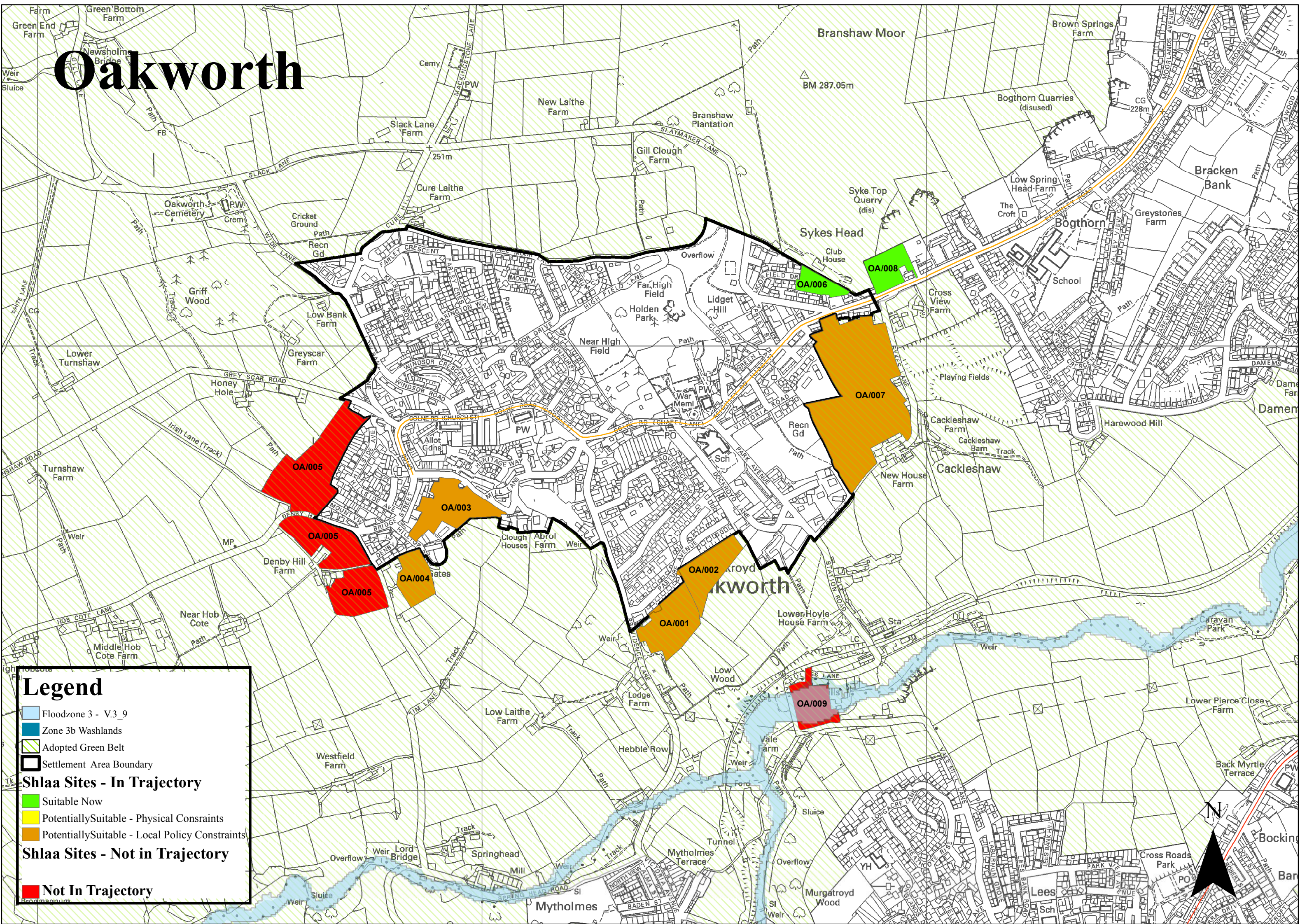
The majority of sites assessed in the SHLAA are protected from development in the RUDP as Green Belt and Safeguarded Land. The topography of the settlement and lack of opportunities for recycling will mean that any new housing sites will be on green field land and this may mean that sites cannot come forward until the medium term of the trajectory.

	‘Deliverable Sites’			‘Developable Sites’								
	SHORT TERM Years 1-6			MEDIUM TERM Years 7-12			LONG TERM Years 13-17			TOTAL		
	Lower Forecast	Upper Forecast	Mid Point	Lower Forecast	Upper Forecast	Mid Point	Lower Forecast	Upper Forecast	Mid Point	Lower Forecast	Upper Forecast	Mid Point
Oakworth Trajectory Total	17	21	19	87	114	100.5	164	219	191.5	268	354	311
Green Field				87	114	100.5	164	219	191.5	268	354	311
Mixed	12	16	14							12	161	14
PDL	5	5	5							5	5	5
PDL Consolidated*	11	13	12							11	13	12
PDL %	64.7	61.9	63.1							4.1	3.7	3.9
Oakworth Residual												
Residual – GF												
Residual – Mixed												
Residual PDL												
Oakworth Capacity Total										268	354	311

	No of Sites	Hectares	Dwellings
Suitable Now	2	1.19	19
Potentially Suitable – Policy Constraints	5	10.19	292
Potentially Suitable – Physical Constraints			
Unsuitable Sites			

		SHORT TERM			MEDIUM TERM			LONG TERM			TOTAL		
		Lower Forecast	Upper Forecast	Mid Point	Lower Forecast	Upper Forecast	Mid Point	Lower Forecast	Upper Forecast	Mid Point	Lower Forecast	Upper Forecast	Mid Point
Oakworth Trajectory Total		17	21	19	87	114	100.5	164	219	191.5	268	354	311
	Suitable Now	17	21	19							17	21	19
	Potentially Suitable (Policy Constraints)				87	114	100.5	164	219	191.5	251	333	292
	Green Belt				87	114	100.5	126	168	147	213	282	247.5
	Other							38	51	44.5	38	51	44.5
	Potentially Suitable (Physical Constraints)												
Residual Supply*													
Oakworth Residual Supply Total													
	Potentially Suitable (Policy Constraints)												
	Green Belt												
	Other												
	Potentially Suitable (Physical Constraints)												
Oakworth Capacity Total											268	354	311

Oakworth



Legend

- Floodzone 3 - V.3_9
- Zone 3b Washlands
- Adopted Green Belt
- Settlement Area Boundary
- Shlaa Sites - In Trajectory**
- Suitable Now
- Potentially Suitable - Physical Constraints
- Potentially Suitable - Local Policy Constraints
- Shlaa Sites - Not in Trajectory**
- Not In Trajectory

